

The image features two pieces of modern furniture against a white brick wall. On the left is a tall cabinet with a light-colored wood grain finish and a black frame. On the right is a shorter cabinet with the same wood grain finish, a blue frame, and a blue horizontal band at the bottom. Both cabinets have simple wooden handles and legs. The background is a white brick wall with a white beam crossing the top right.

ReCabinet

Storage Redone

design & development by House of Thol
production in collaboration with Ahrend



ReCabinet

Storage Redone


The ReCabinet series is a range of sturdy storage solutions with ample space and a sustainable origin.

The ReCabinet is made foremost as a convenient keeper of anything, suitable for both the home- and office environment.

The design creates a new purpose for out-of-use metal filing cabinets and redundant desk tops, and helps cut back the use of raw materials, saving resources.

Every ReCabinet starts with the original metal body of a discarded filing cabinet, fitted with new hinges and coated inside and out with a fresh color.

By adding new doors and raising the cabinet with a made-to-fit support, the ReCabinet is ready for a new life in the spotlights.



ReCabinet

Storage Redone



The ReCabinet comes in two sizes and a range of colors and finishes.

Go full circular with doors and support made from discarded ciranol desk tops, upgraded with a pattern, veneer, coat or even full-color print.

Or choose classic robust, with solid elements in oak, ash or bamboo.

ReCabinet is made to order and has a lead time of about 10-12 weeks. Prices depend on size, material, finish and quantity

ReCabinet is a design by House of Thol Production in collaboration with Ahrend

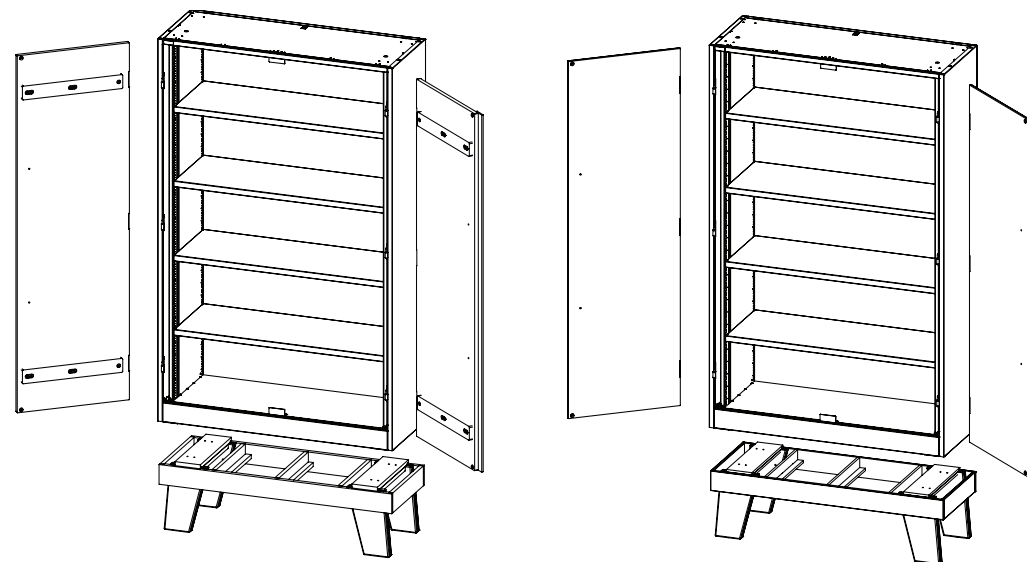


ReCabinet

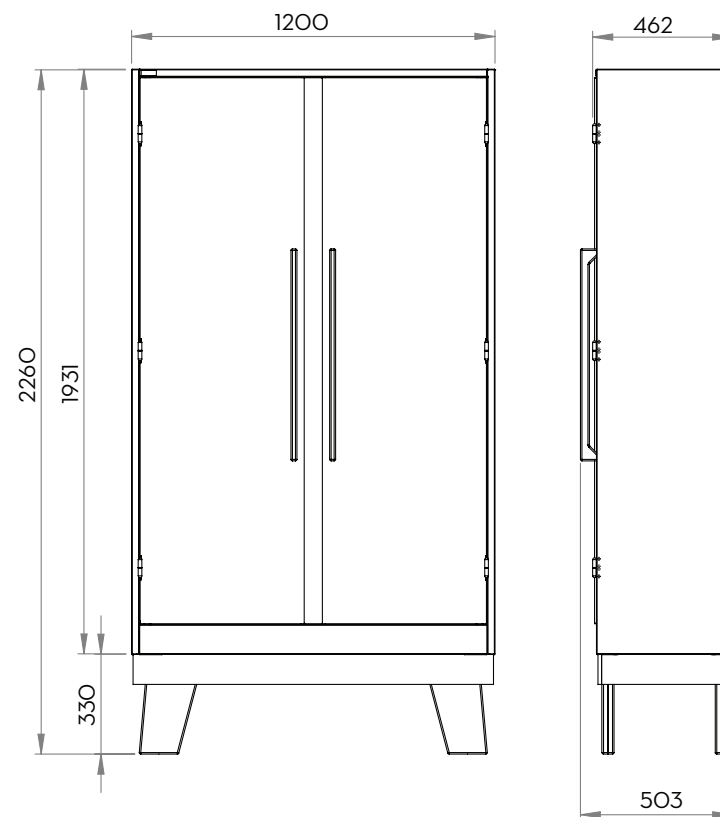
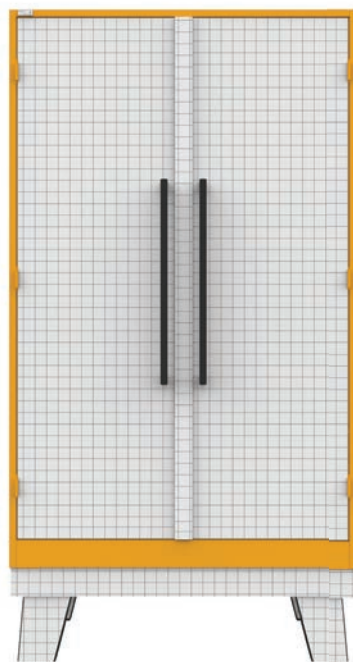
Large

size: 120 x 226 x 46,2 cm

Refinished metal body, added wooden/ciranol support + doors



NB Solid wood doors are fitted with inside girders to avoid warping.



ReCabinet

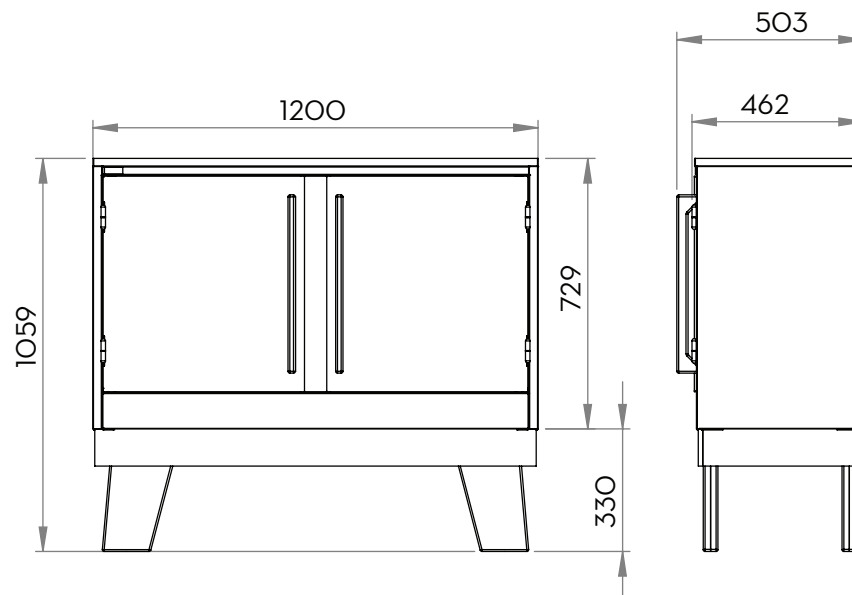
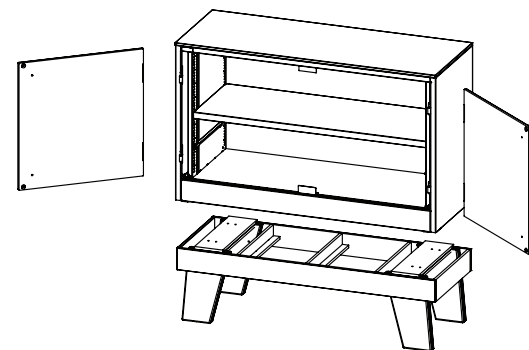
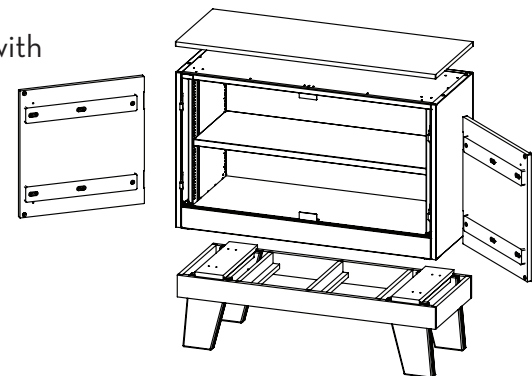
Small

size: 120 x 105,9 x 46,2 cm

Refinished metal body, added wooden/ciranol support + doors



NB Solid wood doors are fitted with inside girders to avoid warping



ReCabinet

colors and finishes

The ReCabinet has an abundance of options when it comes to colors, materials and finishes.

In the next pages you'll find a selection of many of those options and rendered examples of different Recabinet possibilities.

Many more colors, finishes and materials are available upon request.

We're happy to look into other options to make the ReCabinet the perfect circular fit for your sustainable interior project.



color options powdercoat metal body

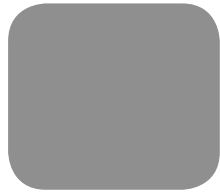
Ahrend Collection



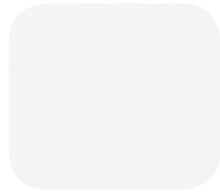
black metallic



anthracite



light grey



white



azure blue



baby blue



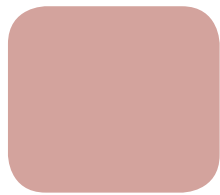
grey green



may green



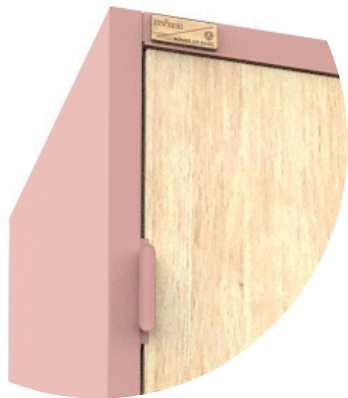
golden yellow



antique pink



corale red



options solid wood doors & support



oak



ash



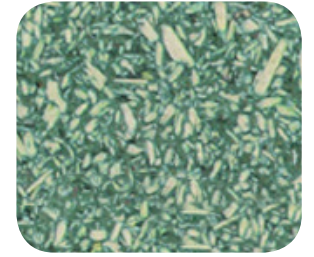
beech



pine



douglas



Canapalithos*

*to be tested - 12,5 mm

water-based wood stain



white wash



grey wash



black stain



blue stain



green stain



yellow stain



rose stain



red stain

NB actual color depends on material and layering - should always be tested



options ciranol doors & support

Ahrend Ciranol Collection



*subject to availability

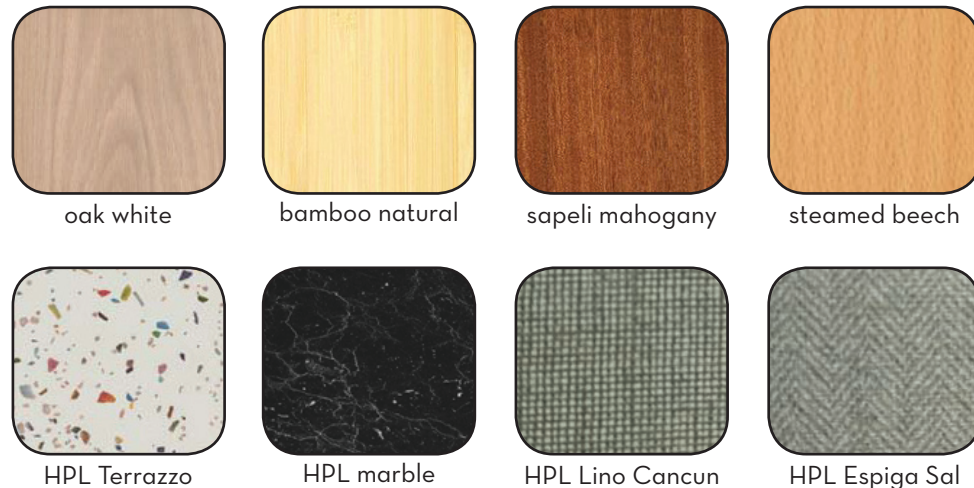
Lacquer coating* - available in all RAL colors - double sided



*preparation with primer - coated after production (no black edges)

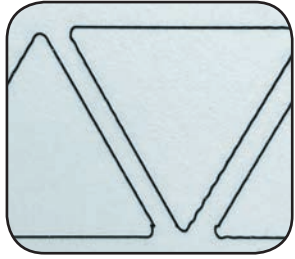
veneer

veneer - w. specialty glue - double sided - black sides



contemporary ciranol finishes

CnC laser - one sided



line cut



engrave

UV flatbed print - one sided - finished w lacquer - black sides



public domain



landscape



company product



circular ciranol coatings

in collaboration with Cooloo

About Cooloo:

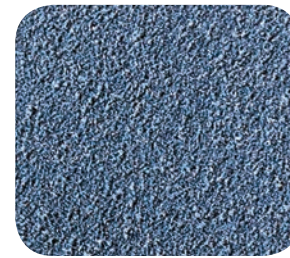
“Our goal is to develop and create a zero-waste product that suits a circular economy. We work together with fabric recycling companies, leather production and upholstery companies, foam recycling companies and many more in order to find ways of transforming waste materials into high quality finishes. CooLLeather and CooLCork are two examples of finishings that integrate waste from the leather and cork production industries.”



cork



leather



linoleum blue
icw Forbo



concrete



rusty metal

*Coating applied after production (no black edges)

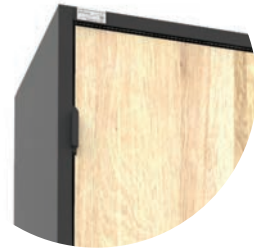
NB: minimum order value applies / high set-up costs can be avoided by coating larger quantities



Modern industrial circular

Powdercoated body, veneered ciranol doors & support

Repurposed ciranol desk tops receive a layer of veneer on front and back before cutting and finishing, creating a classic cabinet with contemporary graphic details from the black ciranol edges.



anthracite
ciranol oak veneer



black metallic



light grey



white



azure blue



baby blue



grey green



may green



golden yellow



corale red



antique pink



oak veneer



beech veneer



bamboo veneer

*Other types of veneer available upon request. Test-panels are made prior to production to guarantee quality.



Classic Robust

Powdercoated body, solid wood doors & support

The combination of repurposed metal and solid wood doors. To keep the tall solid wood doorpanels from warping, each door is fitted with two inside girders.



light grey
solid oak



solid ash



black metallic



anthracite



white



azure blue



baby blue



grey green



may green



golden yellow



corale red



antique pink



solid oak



solid beech



solid ash

*Solid wood is a natural material, color and appearance may vary



Graphic contemporary

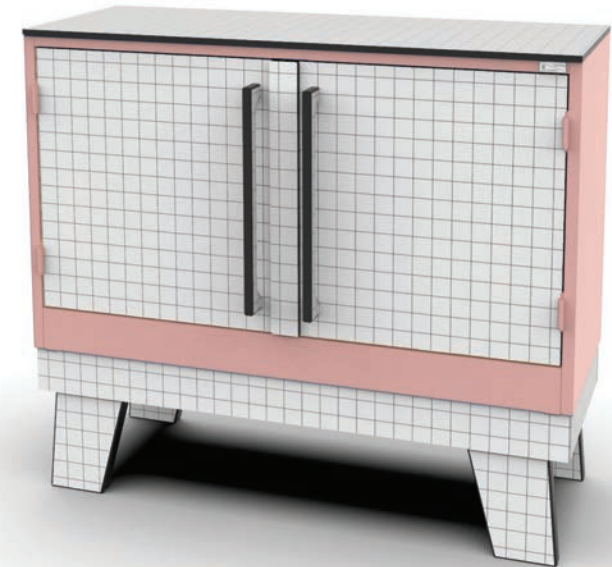
Powdercoated body, laser-engraved ciranol doors & support

The lines of the pattern are laser cut directly into the repurposed ciranol, creating a new contemporary appearance by taking away material rather than adding anything to it.

Possibilities are countless when it comes to patterns and illustrations.



baby blue
ciranol w. laser cut pattern



*Please note: subject to availability and quality of light ciranol desk tops.
Custom made patterns & illustrations possible upon request.



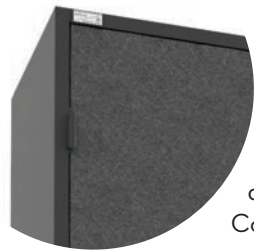
Cooloo circular coatings

Powdercoated body, Cooloo coated ciranol doors & support

Cooloo coatings are applied on the fitted ciranol parts, creating an all-over contemporary skin made of recycled materials. Please note: high set-up costs can be avoided by coating larger quantities in one go. - coating can be applied on a variety of materials.



azure
Linoleum blue
icw Forbo



anthracite
CoolLeather



baby-blue
CoolCork

Modern avant garde

Powdercoated body, UV print ciranol doors, veneered ciranol support

UV flatbed printing can be used to print large images directly onto ciranol desk tops. For extra longevity, the print is coated with varnish or laminated. Typically comes with ciranol veneer support, other options available upon request.

Rachel Ruysch painting
(public domain)



Seascape
(CCO image)



*NB: use images that you have the rights to or are public domain / CCO.





ReCabinet

Storage Redone

Sturdy storage with ample space and a sustainable origin.

ReCabinet was designed by House of Thol in 2018.

After Ahrend spotted the cabinet at a presentation during that year's Dutch Design Week, a collaboration ...

Design and Concept by House of Thol

Production in collaboration with Ahrend

ReCabinet

Storage Redone

design & development by House of Thol
production in collaboration with Ahrend

